

ENGINE

Model	AH-6WG1XYSS, Tier III certified
Type	4-stroke, turbocharged
Cylinders	6
Bore/Stroke	5.79 in x 6.07 in (147 x 154 mm)
Displacement	957 in ³ (15 700 cc)
Grade - ability	70% (35°)
Fuel injection	Direct-Electronic
Fuel	Diesel
Fuel filter	In-line strainer
Cooling	Liquid
Horsepower per SAE J1349	
Net	463 hp (345 kW) @ 1800 rpm
Maximum torque @ 1500 rpm	
Net	1460 lb-ft (1980 N·m)

BOOM/ARM

Boom (Reach)

Length	25 ft 3 in (7.70 m)
Boom w/arm cylinder & plumbing	14,546 lb (6600 kg)
Hoist cylinders (2)	1,544 lb (700 kg) each
Total weight	17,634 lb (8000 kg)

16 ft 5 in Arm (5.0 m)

Bare arm	6,196 lb (2810 kg)
Bucket cylinder linkage & plumbing	2,778 lb (1260 kg)
Total weight	8,974 lb (4070 kg)

13 ft 6 in Arm (4.11 m)

Bare arm	5,336 lb (2420 kg)
Bucket cylinder linkage & plumbing	2,778 lb (1260 kg)
Total weight	8,114 lb (3680 kg)

11 ft 8 in Arm (3.55 m)

Bare arm	4,785 lb (2170 kg)
Bucket cylinder linkage & plumbing	2,778 lb (1260 kg)
Total weight	7,563 lb (3430 kg)

UNDERCARRIAGE

Number of rollers	
Top, each track	3
Bottom, each track	8
Number of shoes	
Double grouser – each side	47
Link pitch	10.3 in (260.35 mm)

HYDRAULICS

Pumps (2)	Variable displacement axial piston design
Capacity –	
Maximum	2 x 116.2 gpm (440 L/min)

System relief pressure –	
Standard	4554 psi (31.4 MPa)
Power Boost	4974 psi (34.3 MPa)

Control valves –	
4-spool section for right track travel, boom, bucket, arm	
5-spool section for left track travel, boom, auxiliary, swing and arm	
Boom and arm anti-drift valves	

Pilot control hydraulic system –	
Pump (1)	Gear design
Maximum capacity	7.1 gpm (27 L/min)
Relief pressure	638 psi (4.4 MPa)

Swing –	
Motor (1)	Fixed displacement axial piston design
Speed	0-6.5 rpm
Brake	Spring-applied hydraulically released with dual cushion relief
Swing torque	177,752 lb-ft (241 kN·m)

Travel –	
Motor (2)	Two-speed axial piston design
Final drive	Planetary gear reduction
Drawbar pull	103,862 lb (462 kN)

Travel Speeds –	
Auto shift high to low	
	Forward/Reverse
Low	1.9 mph (3.0 km/h)
High	2.5 mph (4.1 km/h)

Travel control valve –	Dual stage relief and counter-balance design
------------------------	---

HYDRAULIC CYLINDERS

Boom cylinders (2) –	
Bore diameter	7.5 in (190 mm)
Rod diameter	5.1 in (130 mm)
Stroke	71.1 in (1805 mm)
Arm cylinder (1) –	
Bore diameter	7.9 in (200 mm)
Rod diameter	5.5 in (140 mm)
Stroke	79.7 in (2025 mm)
Bucket cylinder (1) –	
Bore diameter	7.1 in (180 mm)
Rod diameter	4.9 in (125 mm)
Stroke	57.7 in (1465 mm)

ELECTRICAL

Voltage	24 volts, negative ground
Alternator	50 amp
Batteries (2)	Low-maintenance 140 Ah (5 hr rate)

SERVICE CAPACITIES

Hydraulic tank	
Refill capacity	82 gal (310 L)
Total system	172 gal (650 L)
Final drive (per side)	4 gal (15 L)
Swing drive	3.6 gal (13.5 L)
Engine	
w/filter change	13.7 gal (52 L)
Fuel	238 gal (900 L)
Radiator	28.5 gal (108 L)

OPERATING WEIGHT

With 11 ft 8 in (3.55 m) arm, 25 ft 3 in (7.7 m) boom, 35.5 in (900 mm) track shoes, 6,614 lb (3000 kg) bucket, 175 lb (79 kg) operator, full fuel and standard equipment 153,400 lb (69 581 kg)

LIFT CAPACITIES – BOOM LENGTH 25 FT 3 IN (7.70 M)

16 ft 5 in (5.0 m) Arm Lift capacities calculated using a 5,210 lb (2363 kg) bucket, 22,928 lb (10 400 kg) counterweight.

Load (Lift Point) Height	10 ft (3.05 m)		15 ft (4.57 m)		20 ft (6.10 m)		25 ft (7.62 m)		30 ft (9.14 m)		35 ft (10.67 m)		40 ft (12.19 m)		MAXIMUM CAPACITY			
	END	SIDE	END	SIDE	END	SIDE	END	SIDE	END	SIDE	END	SIDE	END	SIDE	@	END	SIDE	
+35 ft (10.67 m)																38 ft 3 in	9,487 lb* (4303 kg)*	9,487 lb* (4303 kg)*
+30 ft (9.14 m)																41 ft 7 in	8,987 lb* (4076 kg)*	8987 lb* (4076 kg)*
+25 ft (7.62 m)												16,487 lb* (7478 kg)*	16,487 lb* (7478 kg)*			43 ft 11 in	8,737 lb* (3963 kg)*	8,737 lb* (3963 kg)*
+20 ft (6.10 m)												18,887 lb* (8567 kg)*	18,887 lb* (8567 kg)*	12,937 lb* (5868 kg)*	12,937 lb* (5868 kg)*	45 ft 5 in	8,737 lb* (3963 kg)*	8,937 lb* (4054 kg)*
+15 ft (4.57 m)											24,837 lb* (11 266 kg)	24,837 lb* (11 266 kg)	19,268 lb (8740 kg)	16,387 lb* (7433 kg)	14,468 lb (6582 kg)	46 ft 4 in	9,937 lb* (4054 kg)	9,337 lb* (4235 kg)*
+10 ft (3.05 m)			35,787 lb* (16 233 kg)*	35,787 lb* (16 233 kg)*	40,837 lb* (18 523 kg)*	40,837 lb* (18 523 kg)*	32,687 lb* (14 826 kg)*	32,518 lb (14 750 kg)	27,737 lb* (12 581 kg)*	24,518 lb (11 121 kg)	24,487 lb* (11 107 kg)*	18,418 lb (8354 kg)	18,937 lb* (8589 kg)*	13,968 lb (6336 kg)	46 ft 7 in	9,337 lb* (4235 kg)*	9,937 lb* (4507 kg)*	
+5 ft (1.52 m)			66,937 lb* (30 362 kg)*	66,937 lb* (30 362 kg)*	48,587 lb* (22 039 kg)*	44,968 lb (20 397 kg)	36,837 lb* (16 709 kg)	31,368 lb (14 228 kg)	30,337 lb* (13 760 kg)*	23,118 lb (10 486 kg)	26,037 lb* (11 810 kg)*	17,518 lb (7946 kg)	21,287 lb* (9655 kg)*	13,468 lb (6109 kg)	46 ft 2 in	9,937 lb* (4507 kg)*	10,368 lb* (4703 kg)*	
Ground-line	18,737 lb* (8499 kg)*	18,737 lb* (8499 kg)*	45,337 lb* (20 564 kg)*	45,337 lb* (20 564 kg)*	53,937 lb* (24 465 kg)*	41,968 lb (19 036 kg)	40,537 lb* (18 387 kg)*	29,518 lb (13 389 kg)	32,487 lb* (14 736 kg)*	21,918 lb (9942 kg)	26,368 lb (11 960 kg)	16,768 lb (7606 kg)	20,918 lb (9488 kg)	13,018 lb (5905 kg)	45 ft 2 in	10,887 lb* (4938 kg)*	10,250 lb (4649 kg)	
-5 ft (-1.52 m)	26,737 lb* (12 128 kg)*	26,737 lb* (12 128 kg)*	46,337 lb* (21 018 kg)*	46,337 lb* (21 018 kg)*	55,937 lb* (25 372 kg)*	40,168 lb (18 220 kg)	42,537 lb* (19 294 kg)*	28,218 lb (12 799 kg)	33,168 lb (15 045 kg)	21,018 lb (9533 kg)	25,718 lb (11 665 kg)	16,168 lb (7334 kg)	20,568 lb (9329 kg)	12,668 lb (5746 kg)	43 ft 5 in	12,237 lb* (5559 kg)*	11,118 lb (5043 kg)	
-10 ft (-3.05 m)	34,687 lb* (15 734 kg)*	34,687 lb* (15 734 kg)*	54,937 lb* (24 919 kg)*	54,937 lb* (24 919 kg)*	55,437 lb* (25 146 kg)*	39,468 lb (17 902 kg)	42,637 lb* (19 340 kg)*	27,518 lb (12 482 kg)	32,618 lb (14 795 kg)	20,518 lb (9307 kg)	25,368 lb (11 507 kg)*	15,818 lb (7175 kg)	16,537 lb* (7501 kg)*	12,568 lb (5701 kg)	40 ft 11 in	14,187 lb* (6435 kg)*	12,468 lb (5 655 kg)	
-15 ft (4.57 m)	44,237 lb* (20 065 kg)*	44,237 lb* (20 065 kg)*	66,537 lb* (30 180 kg)*	63,887 lb* (28 978 kg)*	52,937 lb* (24 012 kg)*	39,568 lb (17 948 kg)	41,037 lb* (18 614 kg)*	27,418 lb (12 436 kg)	32,418 lb (14 704 kg)	20,418 lb (9261 kg)	25,418 lb (11 529 kg)*	15,868 lb (7197 kg)			37 ft 4 in	17,287 lb* (7841 kg)*	14,918 lb (6767 kg)	
-20 ft (6.10 m)	62,237 lb* (28 230 kg)*	62,237 lb* (28 230 kg)*	63,037 lb* (28 593 kg)*	63,037 lb* (28 593 kg)*	47,487 lb* (21 540 kg)*	40,168 lb (18 220 kg)	36,837 lb* (16 709 kg)	27,818 lb (12 618 kg)	28,487 lb* (12 921 kg)*	20,268 lb (9420 kg)					32 ft 5 in	17,187 lb* (7796 kg)*	17,187 lb* (7796 kg)*	
-25 ft (7.62 m)	68,087 lb* (30 884 kg)*	68,087 lb* (30 884 kg)*	49,637 lb* (22 515 kg)*	49,637 lb* (22 515 kg)*	37,737 lb* (17 117 kg)*	37,737 lb* (17 117 kg)*	28, 237 lb* (12 808 kg)*	28, 237 lb* (12 808 kg)*										

13 ft 6 in (4.1 m) Arm Lift capacities calculated using a 5,721 lb (2595 kg) bucket, 22,928 lb (10 400 kg) counterweight.

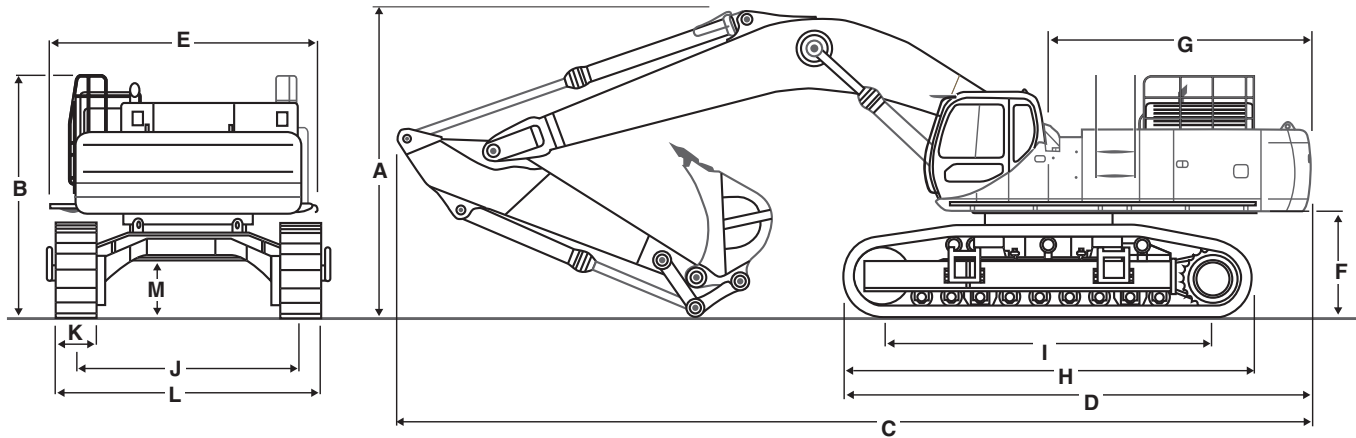
Load (Lift Point) Height	10 ft (3.05 m)		15 ft (4.57 m)		20 ft (6.10 m)		25 ft (7.62 m)		30 ft (9.14 m)		35 ft (10.67 m)		40 ft (12.19 m)		MAXIMUM CAPACITY			
	END	SIDE	END	SIDE	END	SIDE	END	SIDE	END	SIDE	END	SIDE	END	SIDE	@	END	SIDE	
+35 ft (10.67 m)																34 ft 5 in	12,280 lb* (5561 kg)*	12,280 lb* (5561 kg)*
+30 ft (9.14 m)																38 ft 1 in	11,610 lb* (5266 kg)*	11,610 lb* (5266 kg)*
+25 ft (7.62 m)																40 ft 8 in	11,360 lb* (5153 kg)*	11,360 lb* (5153 kg)*
+20 ft (6.10 m)											25,460 lb* (11 549 kg)*	25,460 lb* (11 549 kg)*	21,010 lb* (9530 kg)*	19,245 lb (8729 kg)	42 ft 4 in	11,460 lb* (5198 kg)*	11,460 lb* (5198 kg)*	
+15 ft (4.57 m)									31,710 lb* (14 384 kg)*	31,710 lb* (14 384 kg)*	27,610 lb* (12 524 kg)*	25,145 lb (11 406 kg)	24,910 lb* (11 299 kg)*	18,695 lb (8480 kg)	43 ft 3 in	11,760 lb* (5334 kg)*	11,760 lb* (5334 kg)*	
+10 ft (3.05 m)			62,860 lb* (28 513 kg)*	62,860 lb* (28 513 kg)*	45,810 lb* (20 779 kg)*	45,810 lb* (20 779 kg)*	35,760 lb* (16 221 kg)*	32,545 lb (14 762 kg)	30,010 lb* (13 613 kg)*	23,845 lb (10 816 kg)	26,260 lb* (11 912 kg)*	17,995 lb (8163 kg)			43 ft 6 in	12,360 lb* (5607 kg)*	11,595 lb (5260 kg)	
+5 ft (1.52 m)			47,360 lb* (21 482 kg)*	47,360 lb* (21 482 kg)*	52,760 lb* (23 932 kg)*	43,445 lb (19 706 kg)	39,510 lb* (17 922 kg)*	30,545 lb (13 855 kg)	32,160 lb* (14 588 kg)*	22,645 lb (10 272 kg)	26,845 lb (12 177 kg)	17,245 lb (7822 kg)	17,710 lb* (8033 kg)*	13,295 lb (6031 kg)	43 ft 1 in	13,260 lb* (6015 kg)*	11,545 lb (5237 kg)	
Ground-line	19,660 lb* (8918 kg)*	19,660 lb* (8918 kg)*	42,660 lb* (19 350 kg)*	42,660 lb* (19 350 kg)*	56,110 lb* (25 451 kg)*	41,145 lb (18 663 kg)	42,310 lb* (19 192 kg)*	29,045 lb (13 175 kg)	33,795 lb (15 329 kg)	21,645 lb (9818 kg)	26,195 lb (11 882 kg)	16,595 lb (7527 kg)			42 ft 0 in	14,610 lb* (6627 kg)*	11,945 lb (5418 kg)	
-5 ft (-1.52 m)	31,360 lb* (14 225 kg)*	31,360 lb* (14 225 kg)*	49,710 lb* (22 548 kg)*	49,710 lb* (22 548 kg)*	56,260 lb* (25 519 kg)*	39,995 lb (18 142 kg)	43,210 lb* (19 600 kg)*	28,095 lb (12 744 kg)	33,045 lb (14 989 kg)	20,945 lb (9501 kg)	25,745 lb (11 678 kg)	16,195 lb (7346 kg)			40 ft 1 in	16,560 lb* (7512 kg)*	12,995 lb (5895 kg)	
-10 ft (-3.05 m)	39,110 lb* (17 740 kg)*	39,110 lb* (17 740 kg)*	59,760 lb* (27 107 kg)*	59,760 lb* (27 107 kg)*	54,660 lb* (24 794 kg)*	39,845 lb (18 074 kg)	42,360 lb* (19 214 kg)*	27,745 lb (12 585 kg)	32,745 lb (14 853 kg)	20,695 lb (9387 kg)	25,595 lb (11 610 kg)	16,095 lb (7301 kg)			37 ft 4 in	19,510 lb* (8850 kg)*	14,895 lb (6756 kg)	
-15 ft (4.57 m)	51,760 lb* (23,478 kg)*	51,760 lb* (23,478 kg)*	66,760 lb* (30 282 kg)*	66,760 lb* (30 282 kg)*	65,195 lb (29 572 kg)	50,510 lb* (22 911 kg)*	40,295 lb (18 278 kg)	39,410 lb* (17 876 kg)*	27,895 lb (12 653 kg)	30,910 lb* (14 021 kg)*	20,845 lb (9455 kg)				33 ft 4 in	20,410 lb* (9258 kg)*	18,495 lb (8389 kg)	
-20 ft (6.10 m)	71,660 lb* (32 505 kg)*	71,660 lb* (32 505 kg)*	55,810 lb* (25 315 kg)*	55,810 lb* (25 315 kg)*	42,860 lb* (19 441 kg)*	40,960 lb* (18 579 kg)*	33,010 lb* (14 973 kg)*	28,645 lb (12 993 kg)										
-25 ft (7.62 m)			38,310 lb* (17 377 kg)*	38,310 lb* (17 377 kg)*	29,010 lb* (13 159 kg)*	29,010 lb* (13 159 kg)*												

*Lift capacities do not exceed 75% of the minimum tipping load or 87% of the hydraulic lift capacity. Capacities that are marked with an asterisk are hydraulic limited.

11 ft 8 in (3.55 m) Arm Lift capacities calculated using a 6,345 lb (2878 kg) bucket, 22,928 lb (10 400 kg) counterweight.

Load (Lift Point) Height	10 ft (3.05 m)		15 ft (4.57 m)		20 ft (6.10 m)		25 ft (7.62 m)		30 ft (9.14 m)		35 ft (10.67 m)		MAXIMUM CAPACITY		
	END	SIDE	END	SIDE	END	SIDE	END	SIDE	END	SIDE	END	SIDE	@	END	SIDE
+35 ft (10.66 m)													32 ft 3 in	14,478 lb* (6567 kg)*	14,478 lb* (6567 kg)*
+30 ft (9.14 m)													36 ft 2 in	13,678 lb* (6204 kg)*	13,678 lb* (6204 kg)*
+25 ft (7.62 m)									25,278 lb* (11 466 kg)*	25,278 lb* (11 466 kg)*			38 ft 11 in	13,328 lb* (6046 kg)*	13,328 lb* (6046 kg)*
+20 ft (6.10 m)									26,778 lb* (12 146 kg)*	25,418 lb (11 529 kg)	20,678 lb* (9380 kg)*	18,518 lb (8399 kg)	40 ft 8 in	13,378 lb* (6068 kg)*	13,378 lb* (6068 kg)*
+15 ft (4.57 m)			37,278 lb* (16 909 kg)*	37,278 lb* (16 909 kg)*	41,128 lb* (18 655 kg)*	41,128 lb* (18 655 kg)*	33,378 lb* (15 140 kg)*	32,928 lb* (14 936 kg)*	28,778 lb* (13 054 kg)*	24,368 lb (11 053 kg)	25,578 lb* (11 602 kg)*	18,118 lb (8218 kg)	41 ft 8 in	13,728 lb* (6227 kg)*	12,668 lb (5746 kg)
+10 ft (3.05 m)			64,028 lb* (29 043 kg)*	64,028 lb* (29 043 kg)*	48,628 lb* (22 057 kg)*	45,368 lb (20 578 kg)	37,128 lb* (16 841 kg)*	31,618 lb (14 341 kg)	30,928 lb* (14 029 kg)*	23,168 lb (10 509 kg)	26,818 lb (12 164 kg)	17,468 lb (7923 kg)	41 ft 11 in	14,378 lb* (6522 kg)*	12,168 lb (5519 kg)
+5 ft (1.52 m)			38,328 lb* (17 385 kg)*	38,328 lb* (17 385 kg)*	54,528 lb* (24 734 kg)*	42,268 lb (19 172 kg)	40 578 lb* (18 406 kg)*	29,768 lb (13 502kg)	32,778 lb* (14 868 kg)*	22,068 lb (10 010 kg)	26,368 lb (11 960 kg)	16,768 lb (7606 kg)	41 ft 6 in	15,428 lb* (6998 kg)*	12,168 lb (5519 kg)
Ground- line			39,178 lb* (17 771 kg)*	39,178 lb* (17 771 kg)*	56,278 lb* (25 527 kg)*	40,368 lb (18 310 kg)	42,678 lb* (19 359 kg)*	28,468 lb (12 913 kg)	33,318 lb (15 113 kg)	21,168 lb (9601 kg)	25,818 lb (11 711 kg)	16,268 lb (7379 kg)	40 ft 4 in	16,928 lb* (7679 kg)*	12,668 lb (5746 kg)
-5 ft (-1.52 m)	32,978 lb* (14 959 kg)*	32,978 lb* (14 959 kg)*	50,228 lb* (22 783 kg)*	50,228 lb* (22 783 kg)*	55,678 lb* (25 255 kg)*	39,718 lb (18 016 kg)	42,878 lb* (19 449 kg)*	27,718 lb (12 572 kg)	32,718 lb (14 840 kg)	20,668 lb (9375 kg)	25,518lb (11 575 kg)	15,968 lb (7243 kg)	38 ft 4 in	19,178 lb* (8699 kg)*	13,918 lb (6313 kg)
-10 ft (-3.05 m)	42,328 lb* (19 200 kg)*	42,328 lb* (19 200 kg)*	63,528 lb* (28 816 kg)*	63,368 lb (28 743 kg)	53,228 lb* (24 144 kg)*	39,868 lb (18 084 kg)	41,378 lb* (18 769 kg)*	27,568 lb (12 504 kg)	32,618 lb (14 795 kg)	20,518 lb (9307 kg)			35 ft 4 in	21,928 lb* (9947 kg)*	16,268 lb (7379 kg)
-15 ft (-4.57 m)	57,328 lb* (26 004 kg)*	57,328 lb* (26 004 kg)*	62,428 lb* (28 317 kg)*	62,428 lb* (28 317 kg)*	47,928 lb* (21 740 kg)*	40,468 lb (18 356 kg)	37,378 lb* (16 955 kg)*	27,918 lb (12 663 kg)	28,678 lb* (13 008 kg)*	20,868 lb (9465 kg)			31 ft 1 in	18,378 lb* (8336 kg)*	18,378 lb* (8336 kg)*
-20 ft (-6.10 m)	64,628 lb* (29 315 kg)*	64,628 lb* (29 315 kg)*	49,628 lb* (22 511 kg)*	49,628 lb* (22 511 kg)*	38,528 lb* (17 476 kg)*	38,528 lb* (17 476 kg)*	28,928 lb* (13 122 kg)*	28,668 lb (13 003 kg)							

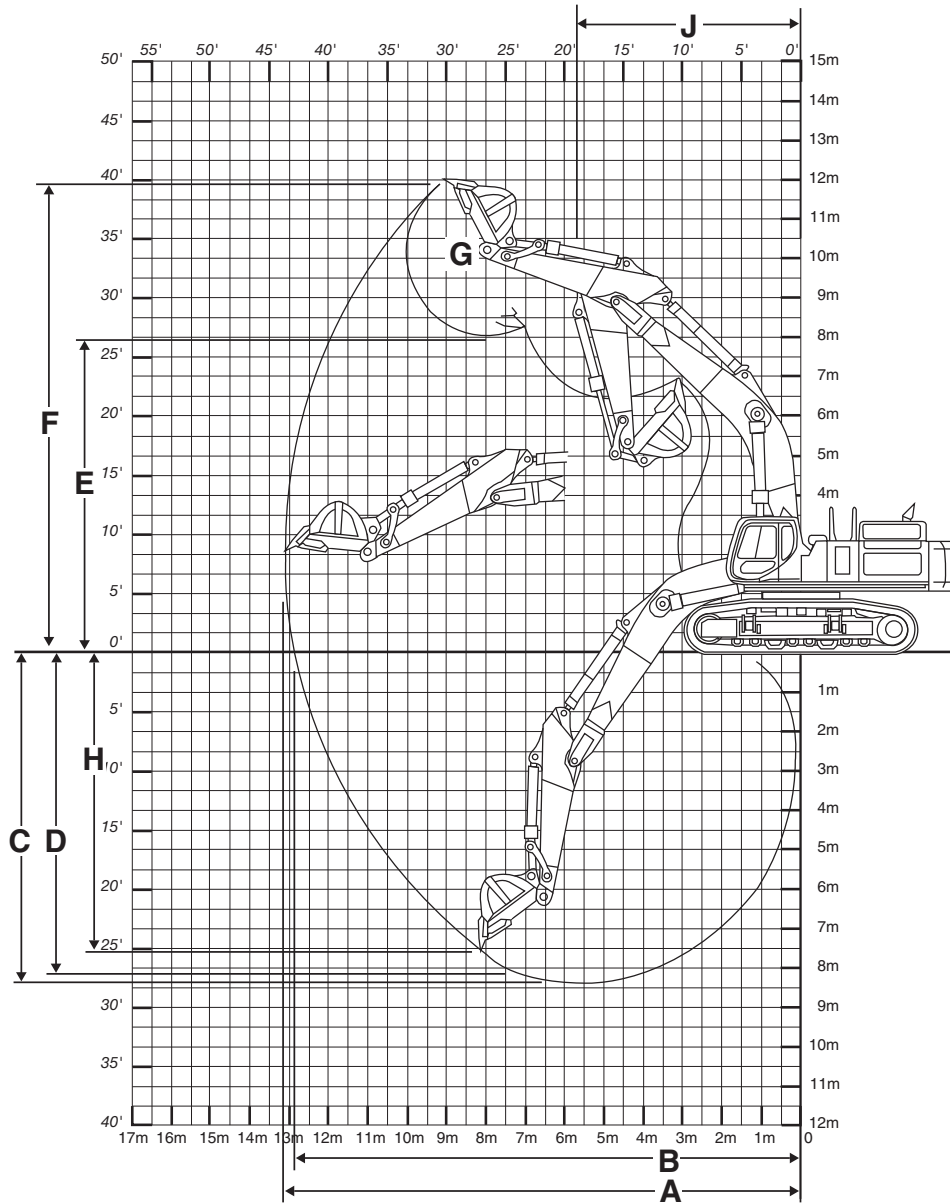
GENERAL DIMENSIONS



DIMENSIONS — BOOM LENGTH 25 FT 3 IN (7.70 M)

	16 ft 5 in (5.00 m) Arm	13 ft 6 in (4.11 m) Arm	11 ft 8 in (3.55 m) Arm
A. Overall height	16 ft 11 in (5.16 m)	14 ft 8 in (4.47 m)	14 ft 1 in (4.30 m)
B. Cab height	11 ft 5 in (3.48 m)	11 ft 5 in (3.48 m)	11 ft 5 in (3.48 m)
C. Overall length	43 ft 8 in (13.30 m)	43 ft 8 in (13.30 m)	43 ft 7 in (13.30 m)
D. w/o attachment	22 ft 8 in (6.91 m)	22 ft 8 in (6.91 m)	22 ft 8 in (6.91 m)
E. Width of upperstructure w/catwalks	13 ft 1 in (3.99 m)	13 ft 1 in (3.99 m)	13 ft 1 in (3.99 m)
F. Upperstructure ground clearance	4 ft 11 in (1.51 m)	4 ft 11 in (1.51 m)	4 ft 11 in (1.51 m)
G. Tail swing radius	13 ft 2 in (4.00 m)	13 ft 2 in (4.00 m)	13 ft 2 in (4.00 m)
H. Track overall length	19 ft 3 in (5.88 m)	19 ft 3 in (5.88 m)	19 ft 3 in (5.88 m)
I. Center to center (idler to sprocket)	15 ft 5 in (4.70 m)	15 ft 5 in (4.70 m)	15 ft 5 in (4.70 m)
J. Track gauge — extended	10 ft 8 in (3.25 m)	10 ft 8 in (3.25 m)	10 ft 8 in (3.25 m)
K. Track shoe width	35.5 in (900 mm)	35.5 in (900 mm)	35.5 in (900 mm)
L. Track overall width w/35.5 in (900 mm) shoes	13 ft 7 in (4.15 m)	13 ft 7 in (4.15 m)	13 ft 7 in (4.15 m)
L. Track overall width w/35.5 in (900 mm) side frames retracted	11 ft 11 in (3.64 m)	11 ft 11 in (3.64 m)	11 ft 11 in (3.64 m)
M. Minimum ground clearance	2 ft 8 in (0.83 m)	2 ft 8 in (0.83 m)	2 ft 8 in (0.83 m)
Working weight*	154,811 lb (70 221 kg)	154,734 lb (70 186 kg)	153,400 lb (69 581 kg)
Ground pressure	10.9 psi (75 bar)	10.9 psi (75 bar)	10.8 psi (74 bar)

*With 35.5 in (900 mm) track shoe, 6,614 lb (3000 kg) bucket, 165 lb (75 kg) operator, full fuel and standard equipment.



PERFORMANCE SPECS — BOOM LENGTH 25 FT 3 IN (7.70 M)

	16 ft 5 in (5.00 m) Arm	13 ft 6 in (4.11 m) Arm	11 ft 8 in (3.55 m) Arm
A. Maximum dig radius	47 ft 11 in (14.60 m)	44 ft 9 in (13.65 m)	43 ft 2 in (13.16 m)
B. Dig radius at groundline	46 ft 11 in (14.30 m)	44 ft 0 in (13.40 m)	42 ft 4 in (12.90 m)
C. Maximum dig depth	32 ft 4 in (9.85 m)	29 ft 5 in (8.97 m)	27 ft 7 in (8.40 m)
D. Dig depth - 8 ft 0 in (2.44 m) level bottom	32 ft 0 in (9.75 m)	29 ft 0 in (8.85 m)	27 ft 2 in (8.27 m)
E. Dump height	28 ft 7 in (8.71 m)	26 ft 9 in (8.16 m)	26 ft 4 in (8.02 m)
F. Overall reach height	41 ft 8 in (12.70 m)	39 ft 6 in (12.04 m)	39 ft 1 in (11.92 m)
G. Bucket rotation	175°	175°	175°
H. Vertical straight wall dig depth	28 ft 4 in (8.63 m)	24 ft 2 in (7.36 m)	22 ft 6 in (6.87 m)
J. Minimum swing radius	18 ft 8 in (5.70 m)	18 ft 8 in (5.68 m)	19 ft 1 in (5.81 m)
Arm digging force			
Standard	39,352 lb (175 kN)	45,411 lb (202 kN)	50,357 lb (224 kN)
Power Boost	43,163 lb (192 kN)	49,683 lb (221 kN)	55,078 lb (245 kN)
Bucket digging force			
Standard	65,200 lb (290 kN)	65,194 lb (290 kN)	65,194 lb (290 kN)
Power Boost	71,260 lb (317 kN)	71,264 lb (317 kN)	71,264 lb (317 kN)

STANDARD EQUIPMENT

OPERATOR'S COMPARTMENT

Sliding front window – storable
 LCD monitor display
 Skylight
 Cab with Isomount® system
 Adjustable deluxe seat with
 3 in (76 mm) retractable seat belt
 Safety glass – all windows
 Climate Control System
 AM/FM Radio w/auto tuner
 Windshield wiper w/washer
 Anti-theft device

ENGINE

AH-6WG1XYSS turbocharged diesel
 Tier III certified
 Warm up mode
 Selectable one touch or auto
 accelerator/decelerator
 Dial type throttle control
 Emergency stop
 Auto engine derate
 Auto and one touch idle

ELECTRICAL

Batteries (2)
 Electronic Systems Monitor
 Boom worklight
 Turntable worklight

HYDRAULICS

ISO pattern pilot controls
 Work mode selector: SP, H & Auto
 Power Boost – automatic
 2 Variable flow piston pumps
 Auxiliary attachment mode
 Neutral pump destroke
 Auxiliary hydraulic valve
 Boom and arm anti-drift valves
 Attachment cushion control for boom and arm
 100% return oil filtration
 Boom priority
 Hydraulic reversing cooling fan

UNDERCARRIAGE

Shoes: 35.5 in (900 mm) 2-bar, 47 per side
 Track length: 19 ft 3 in (5.88 m)
 Track gauge: 10 ft 7 in (3.25 m)
 Sealed and lubed track

TRACK DRIVE

2-speed hydrostatic travel
 Straight tracking travel priority
 Disc-type parking brakes

UPPERSTRUCTURE

Boom: 25 ft 3 in (7.70 m) one piece
 Hammer adaptable
 Swing brake

OTHER

Counterweight: 22,928 lb (10 400 kg)
 Single key lockup

OPTIONAL EQUIPMENT

UPPERSTRUCTURE

Arm: 16 ft 5 in or 13 ft 9 in (5.00 m or 4.20 m)
 FOPS guard level 2
 Front screen
 Front grill
 Sun visor
 Rain deflector
 See through skylight

HYDRAULICS

Auxiliary hydraulics
 Single acting, one pump
 Double acting, single or dual pump
 (includes heavy-duty bucket linkage)
 Double acting general purpose for use with
 thumb kit
 Control pattern selector valve

OTHER

Air suspension seat
 Load holding control devices, cylinder mounted
 Esco-Loc* Hydraulic Coupler
 Counterweight removal device

BUCKETS

Application	Width	SAE Heaped Capacity
Heavy-duty	42 in thru 84 in (1.06 m thru 2.13 m)	2.53 yd ³ thru 5.91 yd ³ (1.93 m ³ thru 4.52 m ³)
Extreme-duty	45 in thru 84 in (1.14 m thru 2.13 m)	2.47 yd ³ thru 5.30 yd ³ (1.89 m ³ thru 4.05 m ³)

NOTE: All specifications are stated in accordance with SAE Standards or Recommended Practices, where applicable.

NOTE: All engines meet current EPA emissions requirements.

IMPORTANT: Case Construction Equipment Inc. reserves the right to change these specifications without notice and without incurring any obligation relating to such change. Case Construction Equipment Inc. does not warrant the safety or reliability of attachments from other manufacturers.

Case is a registered trademark of CNH America LLC. Any trademarks referred to herein, in association with goods and/or services of companies other than CNH America LLC, are the property of those respective companies.



www.casece.com