

CX240B LR EXCAVATOR TIER III CERTIFIED

ENGINE

Model	Isuzu 4HK1X, Tier III certified
Type	4-stroke, turbocharged
Cylinders	4
Bore/Stroke	4.53 in x 4.92 in (115 x 125 mm)
Displacement	317 in ³ (5.2 L)
Fuel injection	Direct
Fuel	Diesel
Cooling	Liquid
Horsepower per SAE J1349	
Net	177 hp (132 kW) @ 2000 rpm
Maximum torque @ 1500 rpm	
Net	469 lb-ft (636 N·m)

BOOM/ARM

Boom	
Length	33 ft 10 in (10.30 m)
Boom w/arm cylinder & plumbing	6,735 lb (3055 kg)
Hoist cylinders (2)	441 lb (200 kg) ea
Total weight	7,617 lb (3455 kg)

26 ft 3 in Arm (8.00 m)

Bare arm	2,815 lb (1277 kg)
Bucket cylinder linkage & plumbing	551 lb (250 kg)
Total arm weight	3,366 lb (1527 kg)

UNDERCARRIAGE

Number of top rollers	
Top, each track	2
Bottom, each track	9
Number of shoes	
Triple grouser – each track	51
Link pitch	7.48 in (190 mm)
Gradability	70%

HYDRAULICS

Pumps (2)	Variable displacement axial piston pumps with regulating system
Capacity –	
Maximum	2 x 61.8 gpm (234 L/min)
System relief pressure –	
Standard	4,975 psi (34.3 MPa)
Power Boost	5,337 psi (36.8 MPa)
Control valves –	
4-spool section for right track travel, bucket, boom, and arm acceleration	
5-spool section for left track travel, auxiliary, swing, boom acceleration, and arm	
Boom and arm anti-drift valves	
Pilot control hydraulic system –	
Pump (1)	Gear design
Maximum capacity	5.3 gpm (20 L/min)
Relief pressure	566 psi (3900 kPa)
Swing –	
Motor (1)	Fixed displacement axial piston design
Speed	0-10.7 rpm
Brake	Spring-applied hydraulically released with dual cushion relief
Travel –	
Motor (2)	Two-speed axial piston design
Final drive	Planetary gear reduction
Drawbar pull	45,254 lb (201.3 kN)
Travel Speeds –	
Auto shift high to low	
	Forward/Reverse
Low	2.2 mph (3.5 km/h)
High	3.4 mph (5.5 km/h)
Travel control valve –	Dual stage relief and counter-balance design

HYDRAULIC CYLINDERS

Boom cylinders (2) –	
Bore diameter	5.1 in (130 mm)
Rod diameter	3.5 in (90 mm)
Stroke	52.6 in (1335 mm)
Arm cylinder (1) –	
Bore diameter	5.9 in (150 mm)
Rod diameter	4.1 in (105 mm)
Stroke	68.4 in (1737 mm)
Bucket cylinder (1) –	
Bore diameter	3.7 in (95 mm)
Rod diameter	2.6 in (65 mm)
Stroke	34.7 in (881 mm)

ELECTRICAL

Voltage	24 volts, negative ground
Alternator	50 amp
Batteries (2)	Low-maintenance 92 Ah (5 hr rate)

SERVICE CAPACITIES

Hydraulic tank	
Refill capacity	38.8 gal (147 L)
Total system	66.0 gal (250 L)
Final drive (per side)	5.3 qt (5.0 L)
Swing drive	10.2 qt (9.7 L)
Engine	
w/filter change	24.4 qt (23.1 L)
Fuel	108.3 gal (410 L)
Radiator	26.6 qt (25.2 L)

OPERATING WEIGHT

With 26 ft 3 in (8.00 m) arm, 23.6 in (600 mm) track shoes, 728 lb (330 kg) bucket, 165 lb (75 kg) operator, full fuel and standard equipment	61,730 lb (28 000 kg)
---	-----------------------

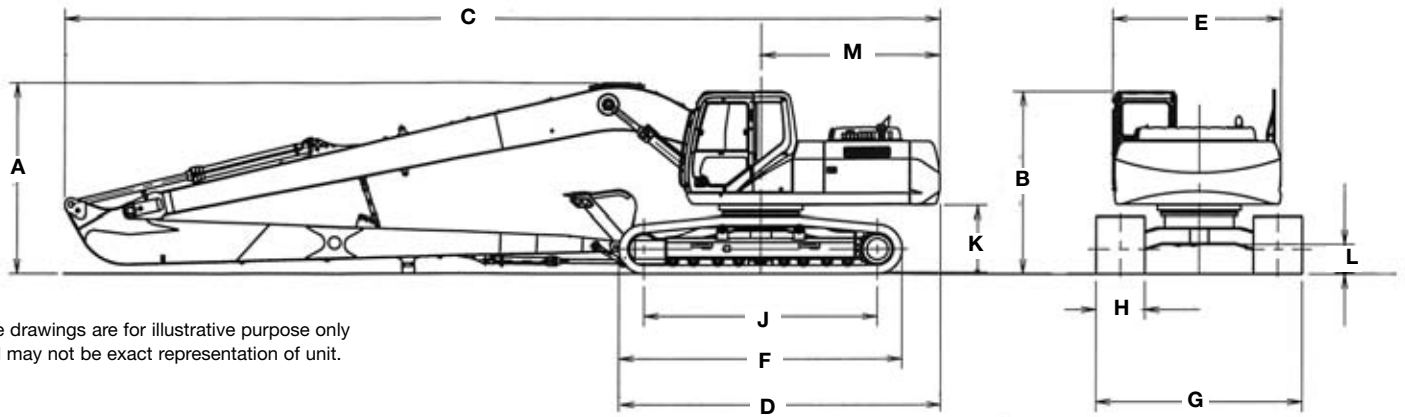
LIFT CAPACITIES

26 ft 3 in (8.00 m) Arm Lift capacities calculated using a 728 lb (330 kg) bucket, 17,417lb (7900 kg) counterweight.

Load (Lift Point) Height	10 ft (3.05 m)		15 ft (4.57 m)		20 ft (6.10 m)		25 ft (7.62 m)		30 ft (9.14 m)		35 ft (10.67 m)	
	END	SIDE	END	SIDE	END	SIDE	END	SIDE	END	SIDE	END	SIDE
+40 ft (12.19 m)												
+35 ft (10.67 m)												
+30 ft (9.14 m)												
+25 ft (7.62 m)												
+20 ft (6.10 m)												
+15 ft (4.57 m)												
+10 ft (3.05 m)									6,115 lb* (2774 kg)*	6,115 lb* (2774 kg)*	5,415 lb* (2456 kg)*	5,415 lb* (2456 kg)*
+5 ft (1.52 m)	6,265 lb* (2842 kg)*	6,265 lb* (2842 kg)*	15,715 lb* (7128 kg)*	15,715 lb* (7128 kg)*	11,415 lb* (5178 kg)*	11,415 lb* (5178 kg)*	8,715 lb* (3953 kg)*	8,715 lb* (3953 kg)*	7,115 lb* (3227 kg)*	7,115 lb* (3227 kg)*	6,115 lb* (2774 kg)*	6,115 lb* (2774 kg)*
Ground- line	3,965 lb* (1798 kg)*	3,965 lb* (1798 kg)*	9,715 lb* (4407 kg)*	9,715 lb* (4407 kg)*	13,415 lb* (6085 kg)*	12,813 lb (5812 kg)	10,215 lb (4633 kg)	9,463 lb (4292 kg)	8,165 lb* (3703 kg)*	7,263 lb (3294 kg)	6,865 lb* (3114 kg)*	5,713 lb (2591 kg)
-5 ft (-1.52 m)	4,315 lb* (1957 kg)*	4,315 lb* (1957 kg)*	7,665 lb* (3477 kg)*	7,665 lb* (3477 kg)*	14,515 lb* (6584 kg)*	11,463 lb (5199 kg)	11,465 lb (5200 kg)	8,513 lb (3861 kg)	9,065 lb* (4112 kg)*	6,613 lb (2999 kg)	7,515 lb* (3409 kg)*	5,263 lb (2387 kg)
-10 ft (-3.05 m)	5,165 lb* (2343 kg)*	5,165 lb* (2343 kg)*	7,615 lb* (3454 kg)*	7,615 lb* (3454 kg)*	13,065 lb* (5926 kg)*	10,613 lb (4814 kg)	12,265 lb (5563 kg)	7,863 lb (3566 kg)	9,765 lb* (4429 kg)*	6,113 lb (2773 kg)	7,963 lb (3612 kg)	4,863 lb (2206 kg)
-15 ft (-4.57 m)	6,015 lb* (2728 kg)*	6,015 lb* (2728 kg)*	8,265 lb* (3749 kg)*	8,265 lb* (3749 kg)*	12,715 lb* (5767 kg)*	10,213 lb (4632 kg)	12,513 lb (5676 kg)	7,463 lb (3385 kg)	9,613 lb (4360 kg)	5,763 lb (2614 kg)	7,713 lb* (3498 kg)	4,563 lb (2070 kg)
-20 ft (-6.10 m)	6,965 lb* (3159 kg)*	6,965 lb* (3159 kg)*	9,315 lb* (4225 kg)*	9,315 lb* (4225 kg)*	13,415 lb* (6085 kg)*	10,113 lb (4587 kg)	12,313 lb (5585 kg)	7,263 lb (3294 kg)	9,413 lb (4270 kg)	5,563 lb (2523 kg)	7,513 lb (3408 kg)	4,413 lb (2002 kg)
-25 ft (-7.62 m)	8,215 lb* (3726 kg)*	8,215 lb* (3726 kg)*	10,415 lb* (4724 kg)*	10,415 lb* (4724 kg)*	14,815 lb* (6720 kg)*	10,263 lb (4655 kg)	12,313 lb (5585 kg)	7,313 lb (3317 kg)	9,363 lb (4247 kg)	5,563 lb (2523 kg)	7,463 lb (3385 kg)	4,363 lb (1979 kg)
-30 ft (-9.14 m)	9,765 lb* (4429 kg)*	9,765 lb* (4429 kg)*	12,215 lb* (5541 kg)*	12,215 lb* (5541 kg)*	15,965 lb* (7242 kg)*	10,513 lb (4769 kg)	12,463 lb (5653 kg)	7,463 lb (3385 kg)	9,463 lb (4292 kg)	5,613 lb (2546 kg)	7,565 lb* (3431 kg)*	4,463 lb (2024 kg)
-35 ft (-10.67 m)	11,615 lb* (5268 kg)*	11,615 lb* (5268 kg)*	14,565 lb* (6606 kg)*	14,565 lb* (6606 kg)*	14,965 lb* (6788 kg)*	10,913 lb (4950 kg)	11,915 lb (5404 kg)	7,713 lb (3498 kg)	9,665 lb* (4384 kg)*	5,813 lb (2637 kg)	7,715 lb* (3499 kg)*	4,613 lb (2092 kg)
-40 ft (-12.19 m)	13,715 lb* (6221 kg)*	13,715 lb* (6221 kg)*	17,065 lb* (7740 kg)*	17,065 lb* (7740 kg)*	13,315 lb* (6039 kg)*	11,513 lb (5222 kg)	10,665 lb (4837 kg)	8,163 lb (3703 kg)	8,665 lb* (3930 kg)*	6,213 lb (2818 kg)	7,065 lb* (3205 kg)*	4,963 lb (2251 kg)
-45 ft (-13.72 m)			13,715 lb* (6221 kg)*	13,715 lb* (6221 kg)*	10,715 lb* (4860 kg)*	10,715 lb* (4860 kg)*	8,515 lb (3862 kg)	8,513 lb (3861 kg)				

LIFT CAPACITIES (CONT'D)

Load (Lift Point) Height	40 ft (12.19 m)		45 ft (13.72 m)		50 ft (15.24 m)		55 in (16.76 m)		MAXIMUM REACH		
	END	SIDE	END	SIDE	END	SIDE	END	SIDE	@	END	SIDE
+40 ft (12.19 m)									48 ft 11 in (14.90 m)	3,065 lb* (1390 kg)*	3,065 lb* (1390 kg)*
+35 ft (10.67 m)									52 ft 1 in (15.87 m)	3,015 lb* (1367 kg)*	3,015 lb* (1367 kg)*
+30 ft (9.14 m)					3,665 lb* (1662 kg)*	3,665 lb* (1662 kg)*			54 ft 6 in (16.61 m)	3,015 lb* (1367 kg)*	3,015 lb* (1367 kg)*
+25 ft (7.62 m)			3,715 lb* (1685 kg)*	3,715 lb* (1685 kg)*	3,715 lb* (1685 kg)*	3,715 lb* (1685 kg)*			56 ft 5 in (17.19 m)	3,015 lb* (1367 kg)*	2,663 lb (1208 kg)
+20 ft (6.10 m)			3,965 lb* (1798 kg)*	3,965 lb* (1798 kg)*	3,865 lb* (1753 kg)*	3,713 lb (1684 kg)	3,815 lb* (1730 kg)*	2,863 lb (1299 kg)	57 ft 9 in (17.60 m)	3,065 lb* (1390 kg)*	2,413 lb (1094 kg)
+15 ft (4.57 m)	4,465 lb* (2025 kg)*	4,465 lb* (2025 kg)*	4,265 lb* (1934 kg)*	4,265 lb* (1934 kg)*	4,065 lb* (1844 kg)*	3,513 lb (1593 kg)	4,015 lb* (1821 kg)*	2,763 lb (1253 kg)	58 ft 7 in (17.85 m)	3,165 lb* (1436 kg)*	2,213 lb (1004 kg)
+10 ft (3.05 m)	4,965 lb* (2252 kg)*	4,965 lb* (2252 kg)*	4,615 lb* (2093 kg)*	4,213 lb (1911 kg)	4,315 lb* (1957 kg)*	3,363 lb (1525 kg)	4,165 lb* (1889 kg)*	2,613 lb (1185kg)	59 ft 0 in (17.98 m)	3,315 lb* (1504 kg)*	2,063 lb (936 kg)
+5 ft (1.52 m)	5,465 lb* (2479 kg)*	4,963 lb (2251 kg)	4,965 lb* (2252 kg)*	3,963 lb (1797 kg)	4615 lb* (2093 kg)*	3,113 lb (1412 kg)	4,213 lb (1911 kg)	2,463 lb (1117 kg)	59 ft 0 in (17.98 m)	3,515 lb* (1594 kg)*	1,963 lb (890 kg)
Ground- line	5,965 lb* (2706 kg)*	4,563 lb (2070 kg)	5,315 lb* (2411 kg)*	3,663 lb (1661 kg)	4865 lb* (2207 kg)*	2,913 lb (1321 kg)	4,063 lb (1843 kg)	2,313 lb (1049 lb)	58 ft 6 in (17.83 m)	3563 lb* (1616 kg)*	1,913 lb (868 kg)
-5 ft (-1.52 m)	6,465 lb* (2932 kg)*	4,213 lb (1911 kg)	5,663 lb (2569 kg)	3,413 lb (1548 kg)	4,713 lb (2138 kg)	2,763 lb (1253 kg)	3,963 lb (1797 kg)	2,213 lb (1004 kg)	57 ft 6 in (17.52 m)	3,563 lb (1616 kg)	1,913 lb (868 kg)
-10 ft (-3.05 m)	6,513 lb (2954 kg)	3,913 lb (1775 kg)	5,413 lb (2455 kg)	3,163 lb (1435 kg)	4,563 lb (2070 kg)	2,613 lb (1185 kg)	3,863 lb (1752 kg)	2,113 lb (958 kg)	56 ft 1 in (17.09 m)	3,713 lb (1684 kg)	2,013 lb (913 kg)
-15 ft (-4.57 m)	6,313 lb (2863 kg)	3,713 lb (1684 kg)	5,263 lb (2387 kg)	3,013 lb (1367 kg)	4,463 lb (2024 kg)	2,513 lb (1140 kg)	3,813 lb (1729 kg)	2,063 lb (936 kg)	54 ft 1 in (16.48 m)	3,913 lb (1775 kg)	2,113 lb (958 kg)
-20 ft (-6.10 m)	6,163 lb (2795 kg)	3,563 lb (1616 kg)	5,163 lb (2342 kg)	2,963 lb (1344 kg)	4,413 lb (2002 kg)	2,463 lb (1117 kg)			51 ft 7 in (15.72 m)	4,213 lb (1911 kg)	2,313 lb (1049 kg)
-25 ft (-7.62 m)	6,163 lb (2795 kg)	3,563 lb (1616 kg)	5,163 lb (2342 kg)	2,913 lb (1321 kg)	4,413 lb (2002 kg)	2,463 lb (1117 kg)			48 ft 3 in (14.70 m)	4,713 lb (2138 kg)	2,663 lb (1208 kg)
-30 ft (-9.14 m)	6,213 lb (2818 kg)	3,613 lb (1639 kg)	5,263 lb (2387 kg)	3,013 lb (1367 kg)					44 ft 2 in (13.46 m)	5,513 lb (2501 kg)	3,213 lb (1457 kg)
-35 ft (-10.67 m)	6,413 lb (2909 kg)	3,813 lb (1729 kg)							38 ft 11 in (11.86 m)	4,915 lb* (2229 kg)*	4,163 lb (1888 kg)
-40 ft (-12.19 m)											
-45 ft (-13.72 m)											

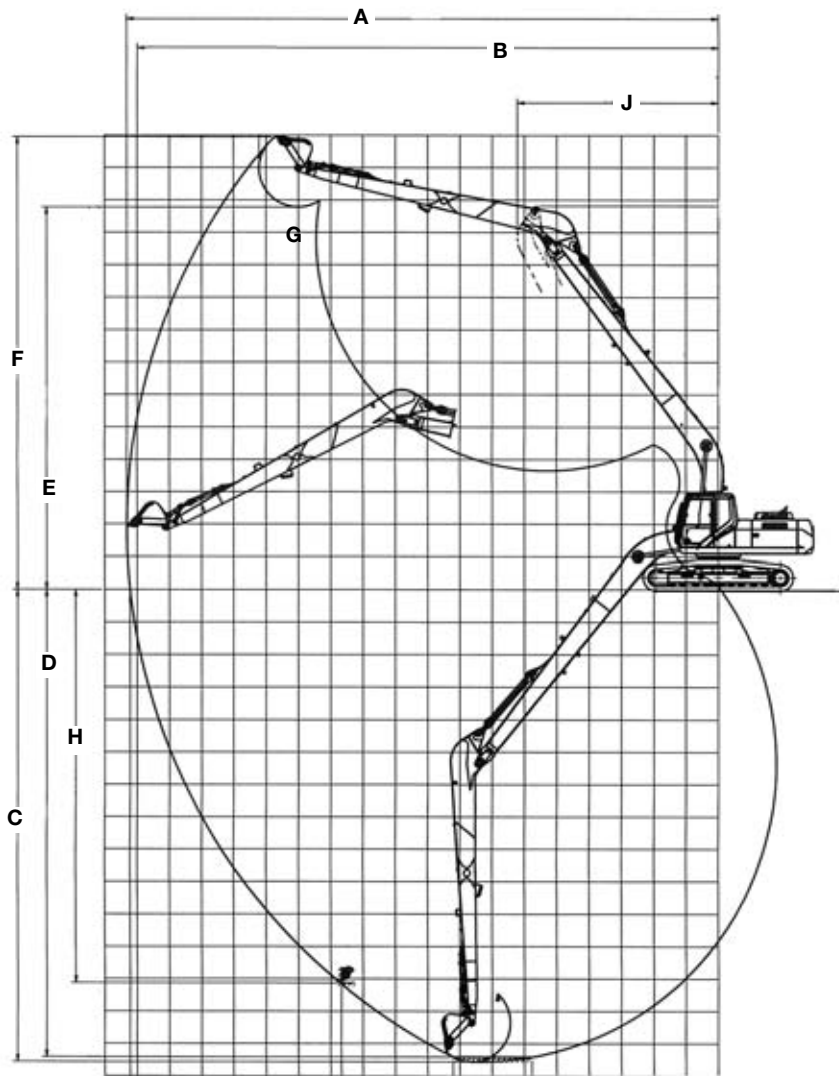


Line drawings are for illustrative purpose only and may not be exact representation of unit.

DIMENSIONS

	26 ft 3 in (8.00 m) Arm
A. Overall height	10 ft 3 in (3.13 m)
B. Cab height	9 ft 10 in (3.00 m)
C. Overall length	47 ft 2 in (14.38 m)
D. w/o attachment	17 ft 4 in (5.27 m)
E. Width of upperstructure	9 ft 1 in (2.77 m)
F. Track overall length	15 ft 4 in (4.65 m)
G. Track overall width w/31.5 in (800 mm) shoes	11 ft 1 in (3.39 m)
H. Track shoe width	31.5 in (800 mm)
J. Center to center (idler to sprocket)	12 ft 7 in (3.84 m)
K. Upperstructure ground clearance	3 ft 7 in (1.10 m)
L. Minimum ground clearance	1 ft 6 in (0.46 m)
M. Tail swing radius	9 ft 8 in (2.95 m)
Working weight*	61,730 lb (28 000 kg)
Ground pressure	6.1 psi (42 kPa)

*With 31.5 in (800 mm) track shoe, 728 lb (330 kg) bucket, 165 lb (75 kg) operator, full fuel and standard equipment.



PERFORMANCE SPECS

	26 ft 3 in (8.00 m) Arm
A. Maximum dig radius	60 ft 1 in (18.32 m)
B. Dig radius at groundline	59 ft 9 in (18.22 m)
C. Maximum dig depth	47 ft 9 in (14.56 m)
D. Dig depth – 8 ft 0 in (2.44 m) level bottom	47 ft 3 in (14.41 m)
E. Dump height	38 ft 8 in (11.78 m)
F. Overall reach height	45 ft 9 in (13.95 m)
G. Bucket rotation	178°
H. Vertical straight wall dig depth	39 ft 10 in (12.13 m)
J. Minimum swing radius	20 ft 5 in (6.22 m)
Arm digging force	
Standard	9,060 lb (40.3 kN)
Bucket digging force	
Standard	17,310 lb (77.0 kN)

NOTE: *Lift capacities on page 2 do not exceed 75% of the minimum tipping load or 87% of the hydraulic lift capacity. Capacities that are marked with an asterisk are hydraulic limited.

STANDARD EQUIPMENT

OPERATOR'S COMPARTMENT

Sliding front window - storable
LCD monitor display
Skylight
Cab with Isomount® system
Adjustable deluxe seat with 3 in (76 mm) retractable seat belt
Safety glass - all windows
Climate Control System
AM/FM Radio w/auto tuner
Windshield wiper w/washer
Anti-theft device
Dome light
Single pedal travel
12 volt power supply
24 volt power supply

ENGINE

Isuzu 4HK1X turbocharged diesel
Tier III certified
Warm up mode
Selectable one touch or auto accelerator/decelerator
Dial type throttle control
Emergency stop
Auto engine derate
Auto and one touch idle

OPTIONAL EQUIPMENT

UPPERSTRUCTURE

FOPS guard level 2
Front screen
Front grill
Sun visor
Rain deflector
See through skylight

BUCKETS

Application	Width	SAE Heaped Capacity
General purpose	24 in thru 36 in (0.61 m thru .91 m)	0.50 yd ³ thru .82 yd ³ (0.38 m ³ thru 0.63 m ³)
Ditching	60 in or 66 in (1.52 m or 1.68 m)	.86 yd ³ or .96 yd ³ (0.66 m ³ or .73 m ³)

ELECTRICAL

Batteries (2)
Electronic Systems Monitor
Boom worklight
Turntable worklight

HYDRAULICS

ISO pattern pilot controls
Work mode selector: SP, H, and Auto
2 Variable flow piston pumps
Auto pump destroke
Boom and arm anti-drift valves
Attachment cushion control for boom and arm
100% return oil filtration

UNDERCARRIAGE

Shoes: 31.5 in (800 mm) 3-bar, 51 per side
Track length: 15 ft 4 in (4.65 m)
Track gauge: 8 ft 6 in (2.59 m)
Sealed and lubed track

TRACK DRIVE

2-speed hydrostatic travel
Straight tracking travel priority
Disc-type parking brakes

UPPERSTRUCTURE

Boom: 26 ft 3 in (8.0 m) one piece
Swing brake

OTHER

Counterweight: 17,417 lb (7900 kg)
Single key lockup

HYDRAULICS

Control pattern selector valve

OTHER

Air suspension seat
Load holding control devices
Cylinder mounted

NOTE: All specifications are stated in accordance with SAE Standards or Recommended Practices, where applicable.

NOTE: All engines meet current EPA emissions requirements.

IMPORTANT: CNH America LLC reserves the right to change these specifications without notice and without incurring any obligation relating to such change. CNH America LLC does not warrant the safety or reliability of attachments from other manufacturers.

Case is a registered trademark of CNH America LLC. Any trademarks referred to herein, in association with goods and/or services of companies other than CNH America LLC, are the property of those respective companies.



www.casece.com